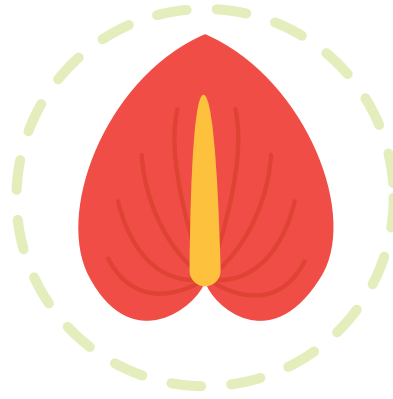


# 15 PLANTAS PERIGOSAS

para os cães



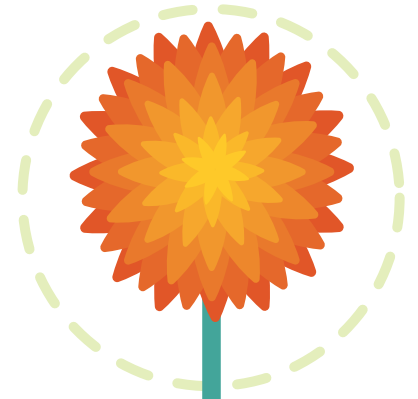
aloe vera



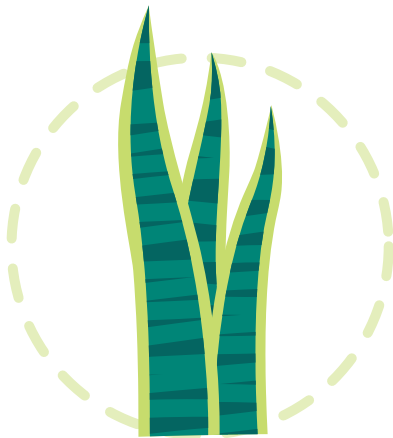
antúrio



bico-de-papagaio  
ou flor-do-natal



crisântemo



espada  
de S. Jorge



hera-do-diabo



hera-inglesa



hortênsia



jarro



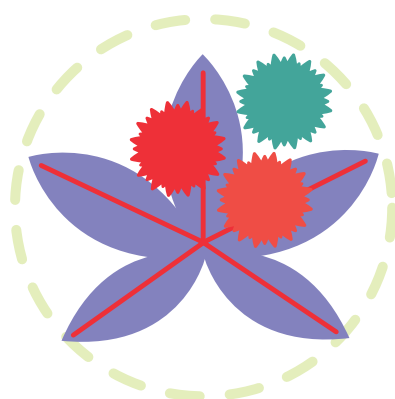
lírio



oleandro



palmeira-sagu



ricino



schefflera



tulipa